

The Industry Standard for Successful Construction Project Delivery

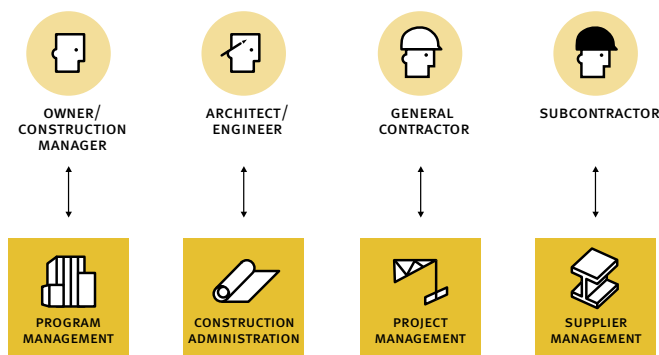
Prolog® Manager, from Meridian Systems®, provides complete project control by automating all aspects of the construction lifecycle, from project design to close out. By delivering in-depth project management features across projects and programs, Prolog helps both large and small organizations deliver their construction projects on time and on budget.

With features including: collaboration, purchasing management, cost control, document management and field administration capabilities, Prolog has become the industry standard for successful construction project delivery. Today's largest building owners, government agencies, and engineering and construction firms use Prolog to improve top-line revenue growth while reducing their capital construction costs. Meridian has been ranked the market share leader for project management software by Constructech magazine,¹ and by the CFMA among general contractors larger than \$101 million in revenue.²

Prolog is a best of breed application designed to integrate with other critical business systems. Built on Microsoft® SQL Server™ database platform, Prolog Manager delivers robust, reliable and scalable performance.

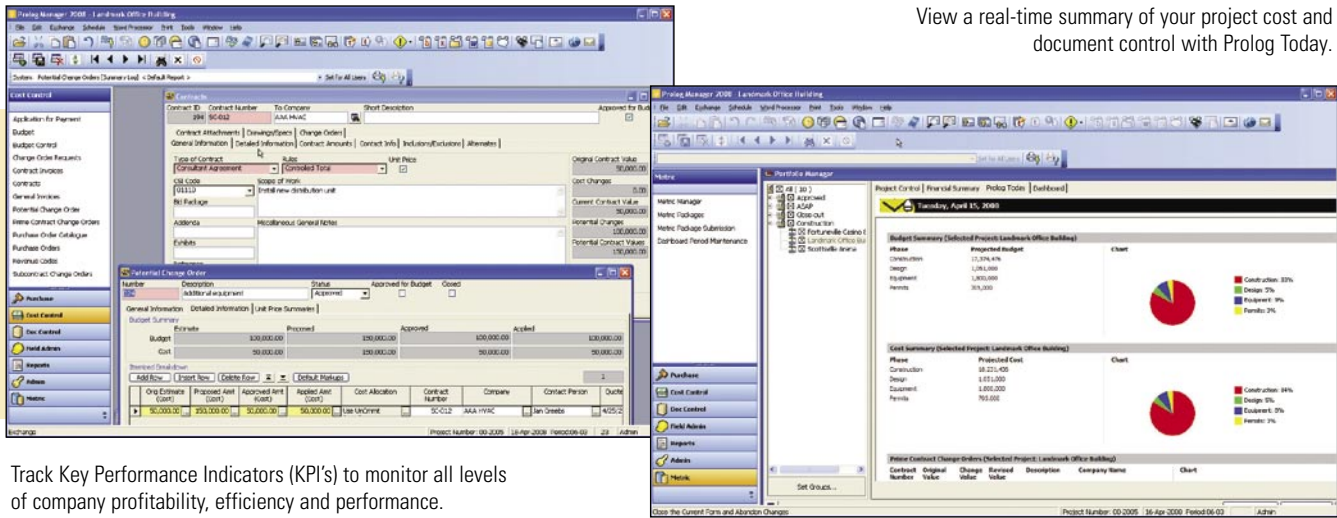
BENEFITS

- › Optimize company performance by standardizing project data and project management processes across your entire organization
- › Increase visibility into your business by managing multiple projects in one database, allowing summary reporting and querying across projects
- › Reduce paperwork and review cycles on all project related documents including RFI's, change orders, submittals, meeting minutes, drawing packages, contracts, all important emails, and more
- › Increase staff productivity by automating repetitive processes and time-consuming tasks
- › Keep project costs on target with real-time cost management and budget tracking
- › Reduce risk and claims litigation by incorporating audit trails, and preventing lost project information
- › Track key performance indicators to monitor all levels of company profitability, efficiency and performance
- › Improve communication and collaboration across geographically dispersed project teams and external vendors
- › Improve field-level performance with a centralized job site tracking system
- › Share your project data with other critical business applications by integrating to accounting systems, scheduling applications, Microsoft applications, and more



Prolog brings together the entire project team in one centralized project database.

View a real-time summary of your project cost and document control with Prolog Today.



Track Key Performance Indicators (KPI's) to monitor all levels of company profitability, efficiency and performance.

EXECUTIVE DASHBOARD

Feature	Advantage
Dashboards	Configure and customize multiple levels of metrics and track results at the corporate, project, or individual level
Metric Manager	Run metrics on a portfolio of projects with a single click; save time from entering individual projects and multiple packages
Dashboard Period Maintenance	Configure predefined time periods to collect data (weekly, monthly, quarterly)
Dashboard Summary Tab in Portfolio Manager	Group individual metrics into Summaries to collect data on individual or multiple projects at the same time
Metric Package Submission Forms	Create metrics; gather and organize data; easily summarize and report on performance results
Metric Packages	Post results of summaries and make available for analysis, review and approval

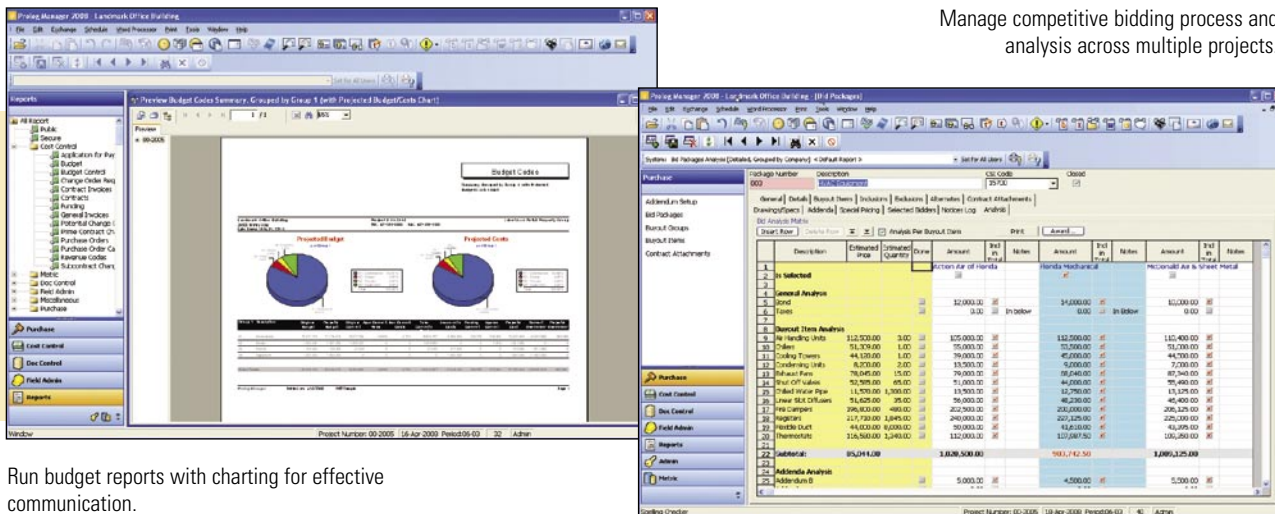
DOCUMENT CONTROL

Feature	Advantage
Auto Alerts	Stay alert to critical follow-up items
Drawing Packages	Manage content, status and transmittal of drawing packages
HotList	Track follow-up items
Drawings and Specifications	Log and track revisions on all drawings and specifications
Dunning Letters	Stay on top of all issues and reduce risk by maintaining an audit trail
Issues	Create an issue history to record all information related to specific issues
Meeting Minutes	Reduce problem resolution time by sharing meeting information more quickly
Requests for Information	Reduce response time and impact on project schedule
Submittal Packages	Improve submittal response times
Submittal Register	Track required submittals to improve timeliness
Transmittal Queue	Save time by scheduling transmittals to the printer or fax

PORTFOLIO MANAGER

Feature	Advantage
Executive Dashboard Module	Easily track key performance indicators (KPI's) across all projects; identify problems or risks before impacting the bottom line
Prolog Today	Quickly view and manage selected projects or project groups from one location
Instant, Real-Time Project Summary	View pie charts showing project budget, costs and contract status
Centralized Database Maintenance Functions	Provide support for all administrative functions in one form
Security Capabilities	Safeguard project information from unauthorized use
Multi-Language Support	Use for international projects
Switchboard	Configure the switchboard menu to follow your business process
Customization Capabilities	Adapt Prolog Manager to fit your needs
Microsoft Word or Built-In Word Processor to Generate Letters	Improve productivity by using full-featured Microsoft Word within Prolog Manager
Multi-Project Reporting, Querying and Security	Save time by tracking multiple projects quickly in one database—login once and open any project

Manage competitive bidding process and analysis across multiple projects.



Run budget reports with charting for effective communication.

REPORT MANAGER

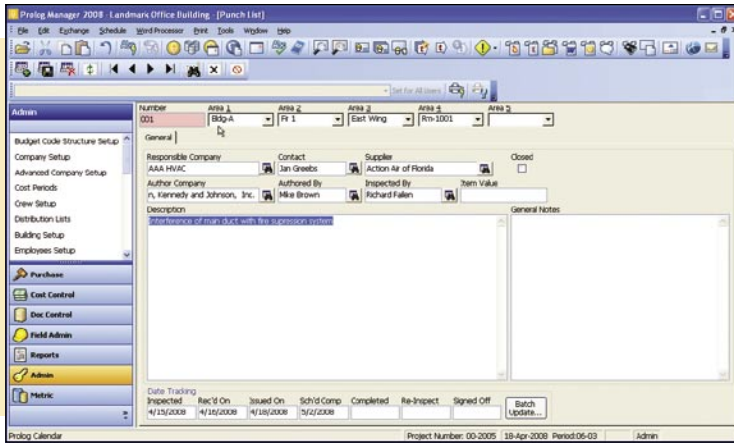
Feature	Advantage
Batch Reporting	Print groups of reports for simple, routine reporting
Exports Directly to PDF or XML	Easily distribute all report output using the Internet and email
Access to More Than 400 Reports	Get all the information you need when you want it
Full filtering and grouping	Selectively view the information that's important to you
Extensive report customization capability	Generate reports that meet your individual business process needs

PROCUREMENT CONTROL

Feature	Advantage
Advanced	Company Setup: Improve record keeping; track detailed information, including qualifications, certifications and contract history
Buyout Groups	Group buyout items into logical groups or systems for cost analysis
Addenda	Manage pre-bid scope; track addenda for all bid packages affected
Award Bid Package Wizard	Eliminate double entry in procurement and contract management
Bid Analysis	Analyze all bidders using one easy-to-use matrix
Bid Packages	Manage buyout more efficiently; track all scopes of work as bid packages
Buyout Items	Eliminate scope errors; track all items to procure for each project
Contract Attachments	Log all contract attachments that bidders are responsible to acknowledge
Select Bidder Wizard	Increase choice of bidders; search for companies that meet your qualifications
Send Notices Wizard	Facilitate communication with bidders; send bid invitations and quote requests via email or fax

COST CONTROL

Feature	Advantage
Budget	Manage budgets, commitments, costs and savings/overruns
Application Integration Software Development Kit (AI-SDK)	Produce programs that connect your accounting system to Prolog Manager
Change Order Requests	Reduce change order request cycle
Budget Control Log	Identify exposures, trends and budget transfers
Change Orders	Record changes in Prolog for instant budget updates
Applications for Payment	Save time; generate requisitions from invoices and change orders
Contracts	Write contracts faster using Microsoft® Word
Expenditure Authorizations and Funding Assignments	Run reports by account or funding source to determine dollars spent from each source
Invoices	Update the cost-to-date project budget with automatic invoice recording
Potential Change Orders	Integrate change management directly into the budget and contracts
Purchase Orders	Write purchase orders faster; use material catalogue for quick PO generation
Revenue Codes	Learn revenue sources through tracking reports



Effectively manage daily work journals, crews and equipment, events, inspections, test, safety notices, punchlists and other quality control tasks in a centralized tracking system within Prolog.

FIELD ADMINISTRATION

Feature	Advantage
Calendar	Keep track of events and other significant dates in your project
Closeout Log	Manage closeout tasks to complete the project more quickly
Crew/Employee Tracking	Track man hours and electronic time sheets
Daily Details	Record weather and general conditions for each project
Daily Work Journal	Record daily construction activities
Events	Track production and milestone events
Field Work Directives	Reduce risk of surprise changes (for authorized work)
Inspections and Tests	Verify compliance with required inspections and tests
Material Inventory	Document all deliveries and associated inventory
Notices to Comply	Increase quality control on a project
Punch List Tracking	Reduce time required to complete a punch list
Safety Notices	Reduce safety violations and accidents through safety management

EMAIL LOGGING

Feature	Advantage
Dedicated Project Email	Prevent lost information by keeping important emails in a central project database. Search, find and use email information in reports, queries, and building issues
Attachments	Team members can forward their emails, along with any attachments to a dedicated project email account
Email Logs	Establish a project communication history and immutable audit trails
Security Manager	Keep information secure by easily managing access to project email database
Email Protocol	SMTP and MAPI, allowing Prolog to work with just about any email system
Compatibility	Microsoft Exchange/Outlook, Lotus Notes/Domino and many others

¹ Statistics excerpted 12008 National Construction-Technology survey, Constructech Magazine.

² CFMA's 2008 Information Technology Survey for the Construction Industry, seventh edition

Requirements

Processor

600-megahertz (MHz) Pentium III-compatible or faster processor; 1-gigahertz (GHz) or faster processor recommended

Operating System

Windows XP with Service Pack 2 or later; Microsoft Windows 2000 Professional with SP4; Microsoft Windows 2000 Server with Service Pack 4 or later; Windows Server 2003 Standard, Enterprise, or Datacenter editions with Service Pack 1 or later (32 bit, English versions only); Vista Home Basic and above

Memory

192 megabytes (MB) of RAM or more; 512 megabytes (MB) or more recommended

Disk Space

Other disk space requirements depend on the components selected during a Custom setup. For more information on server capacity needs, please refer to the section on Advanced Hosting and Server Storage Capacity Guidelines section on Meridian's SupportLink site.

Display

800 x 600, 256 colors (Minimum); 1024 x 768 high color, 32-bit (Recommended)

Required Software

Minimum: Microsoft Internet Explorer 6.0 SP1 or later

Note: Software requirements may have changed; see product installation guide for detailed requirements.

ROTECH

Rotech Consulting

2831 Camino Del Rio South, Suite 108
San Diego, CA 92108

533 Airport Boulevard, Suite 400
Burlingame, CA 94010

(619) 260 1552
(619) 260 1589 fax
sales@rotechinc.com
www.rotechinc.com



1720 Prairie City Road
Suite 120
Folsom, California 95630
USA

(916) 294 2000
(916) 294 2001 fax
(800) 850 2660
www.meridiansystems.com
sales@meridiansystems.com

© Copyright 2008 Meridian Systems. All rights reserved. Prolog, Proliance, Meridian Systems and ProjectTalk are registered trademarks of Meridian Systems, an independent subsidiary of Trimble, in the United States and other countries. The names and logos of other companies mentioned herein may be trademarks of their respective owners. This document is for informational purposes only. Meridian Systems makes no warranties, expressed or implied, in this document. MSS-1043-1000-0408